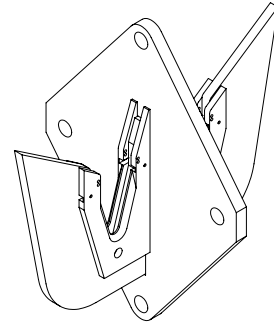
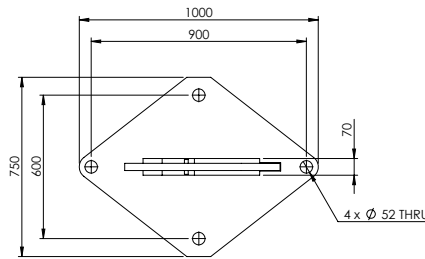
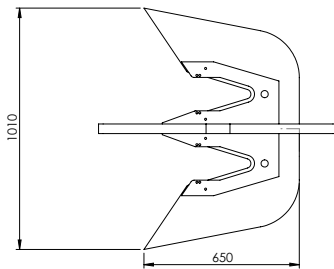


Flatfish Grapnel

The Flatfish Grapnel consists of a large diamond-shaped plate with two prongs. A wide semi-circular seat is set at the base of the prongs.

It is useful in all depths on soft or smooth seabeds especially when the cable is in poor condition, as the large seat minimises damage to the cable. It can be supplied with short or long prongs.



Features:

- Manufactured from high strength structural steel
- Machined blade holders for accurate fitment
- Rounded edge on wings to protect cable sheaves
- Painted using marine grade paint

Applications:

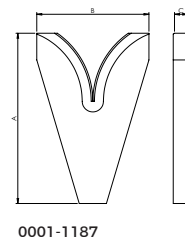
- PLGR (Pre Lay Grapnel Run)
- Designed for use in all water depths on soft or smooth seabeds
- Cutting cable when fitted with blades, curved for lightweight cable, flat for armoured cable
- Recovering cables when fitted with glove
- Maintenance of cable systems

Dimensions

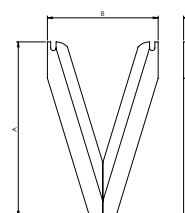
Part Number	Description	A	B	WLL	Proof Load
0001-1160	Flatfish Long Prong	1010mm	650mm	13t	26t
0001-1161	Flatfish Short Prong	750mm	570mm	13t	26t

Spares and Accessories Table

Part Number	Description	A	B	C
0050-0711	12t Shackle	-	-	-
0050-1095	26mm Hammer Lok Coupling	-	-	-
0001-1435	Shear Pin	-	-	-
0001-1163	Glove	400	215	240
0001-1164	Flatfish Armoured Blade Straight (4 per set)	277	178	25
0001-1187	Flatfish Lightweight Blade Curved (4 per set)	270	178	25



0001-1187



0001-1164

