

# Telemetry Load Pin

## TW-3.0

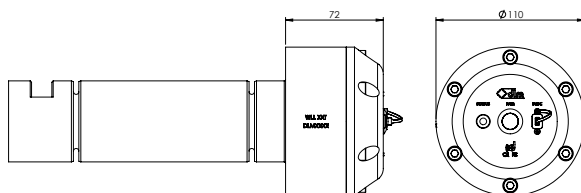
The DLM Telemetry Load Pin utilises DLM's proprietary wireless electronics in order to read and transmit a load wirelessly to a handheld display or system base station. Manufactured from high tensile 17-4PH H1150D stainless steel fully traceable from European mills, the DLM Telemetry Load Pin is particularly suited to environments where cables cannot be easily run and allows for easy and quick installation.

The Telemetry Load Pin can be supplied designed by DLM engineers to meet clients' exacting requirements and each design is proven with a full FEA analysis. The wireless transmission employed makes use of the license free 2.4GHz band and boasts a 800m wireless range.

Commodity Code: 90319000



### Dimensional Data



### Features:

- Stainless steel construction
- Minimum of 5:1 safety factor
- 800m wireless range
- Connect multiple load pins to one display wirelessly
- Rechargeable internal batteries

### Applications:

- Cranes
- Port equipment

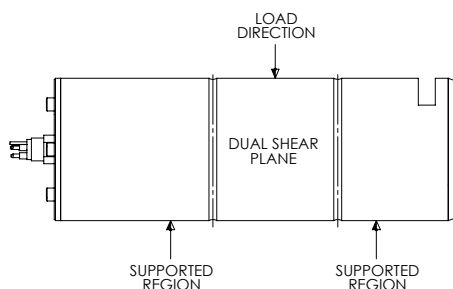
## Specification

Pin material:	17/4PH H1150 + 1150 stainless steel
Bridge Resistance:	350Ω - 1000Ω
Accuracy:	<1.0% FS
Load ratings:	1-2000t
Operating Temperature:	-20 °C to +60 °C
Internal battery:	3.6V Li-Po Rechargeable battery
Battery life:	700 hours continuous (2 years non operational)
Charger:	Supplied with USB charger
Degree of protection:	IP67 with charging socket cap fitted
Display:	Handheld TW-3.0-T / Custom display with TW-3.0-T receiver embedded / From 1 to 12 TW-3.0-T displays
Frequency:	2.4GHz
Range:	Up to 800m line of sight
Locking and fixing arrangements:	Keeper slot and lock plate / Anti-rotation bracket with thread, nut and split pin
Certification:	Supplied with calibration, proof load and test certificates to BS EN ISO 7500-1:2018 and material certification to 3.1 or 3.2 upon request
Approvals:	UKCA, CE, FCC and IC tested and compliant

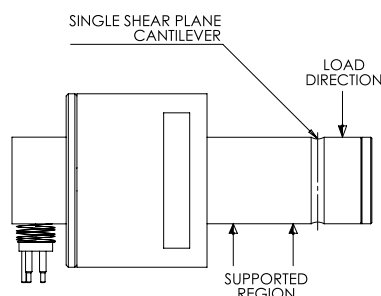
# Custom Load Pin Design Options

## Custom Load Pin design options

### 1. Dual shear plane type

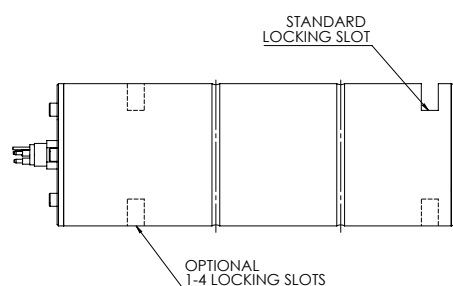


### 2. Single shear plane cantilever pin

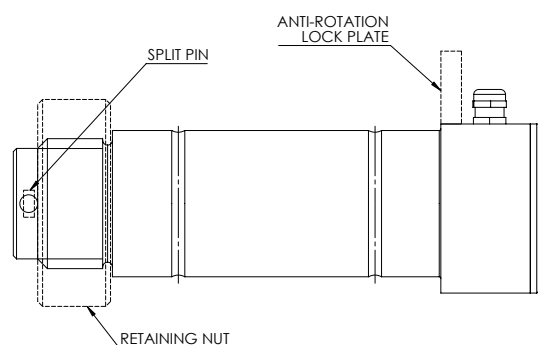


## Locking options

### 1. Lock plate (1 to 4 locking slots)

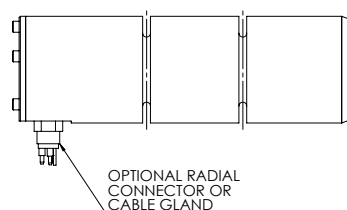


### 2. Anti-Rotation – thread and nut split pin

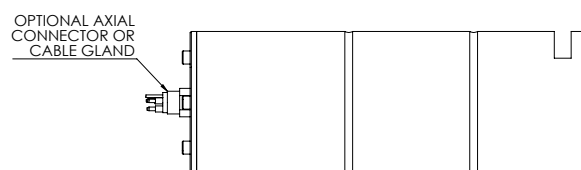


## Cable entry options

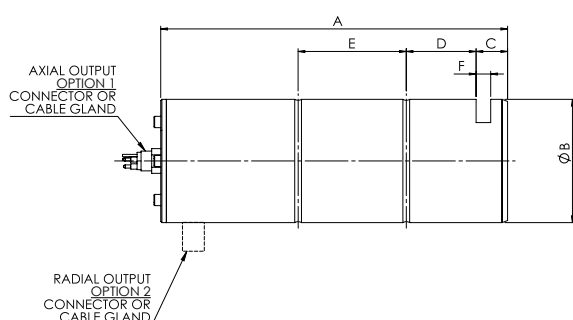
### 1. Radial – connector or cable gland



### 2. Axial – connector or cable gland



## Dimensional Data



## Features:

- Stainless steel construction
- FEA verified designs
- Down hole gauged for high protection
- IP67/IP68 ratings and robust construction
- Removable end caps for easy serviceability and excellent sealing